

# Grade

# 8

*Production Technology*  
*Mr. B's Tech Class*

## Project Work Checklist

- Sign Idea Sheet
- What Makes a Good Sign?
- Sign Initial Idea Sheets
- Sign Final Idea Sheet
- Evaluation Sheet
- Planning Sheet
- Router Safety Quizzes
- Other Safety Quizzes  
(As Necessary)

## Tech Ed 8 SCO's

4.1, 4.2, 4.4, 4.5, 4.6, 4.7, 4.8,  
4.10, 5.1, 5.4, 5.5, 5.8.

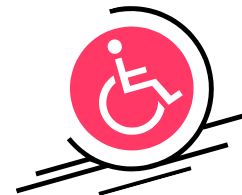
## Great Sign Design

Your Task:

“Signs, signs, everywhere signs...” like the song says, signs are everywhere around us. Most are functional – we know what they mean – but perhaps are not very aesthetic. I think you and your group could do a better job!

Goal:

Find a sign somewhere in the school or community that could be improved – maybe a bathroom sign, maybe a *We're Open* sign. Once your class has picked a sign, you will compete against each other to design a **Better Sign!**



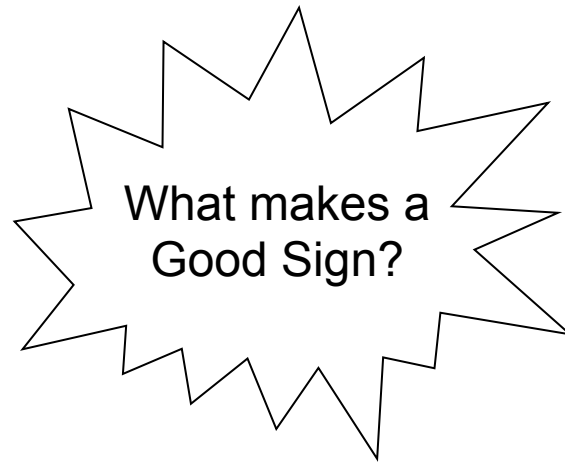
## Sign Idea Page

Take a look around the school and local community. Find examples of what signs exist. In the space below write down all the signs you find and describe them. If possible take some pictures of them to use to create a presentation.

Sign	Description ( <i>Location, Appearance, Materials, etc.</i> )

## What makes a Good Sign?

After completed your list of signs, as a group, and then as a class, have a discussion of what makes a good sign? Look at your examples or online for other examples. What elements of design make one sign better than another sign? Record your findings below:



# Sign Idea Page

Selected Sign: \_\_\_\_\_

In the space below, design some initial ideas for what the sign might look like. Include any necessary measurements or other details. Each person in the group is responsible for their own 4 ideas – *Remember your first idea is your worst idea!*

## Initial Ideas

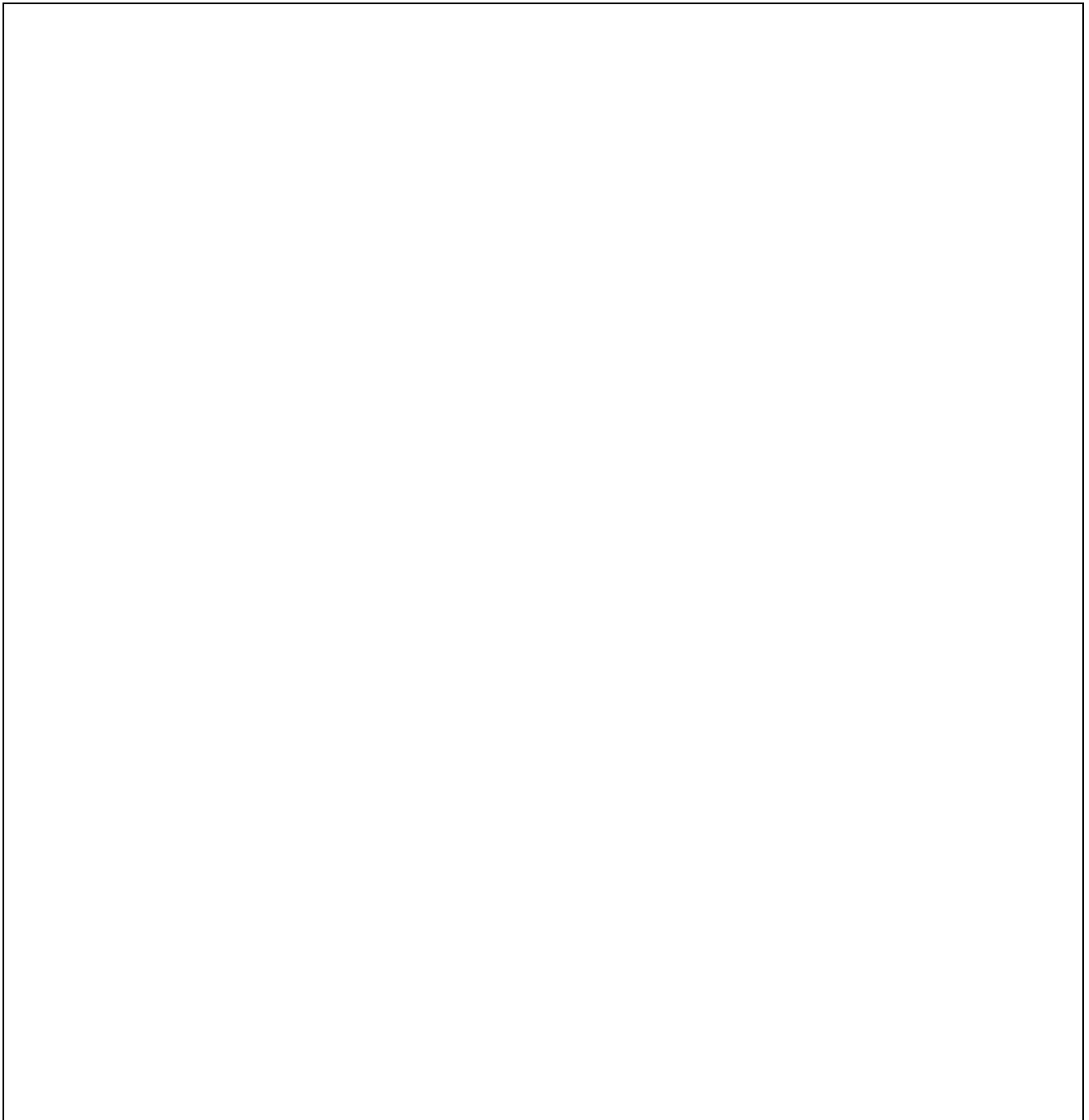

Name: \_\_\_\_\_

## Selected Sign Page

**Group Comments on Initial Ideas:**

### **Final Idea**

*(Should be neatly drawn, labeled and coloured)*

A large, empty rectangular box with a thin black border, intended for drawing the final idea. The box is currently blank.

# Evaluate Your Idea

Take a look at the “What makes a good sign?” page. How does your sign measure up?

In the space below make a list of the elements of good sign design and discuss how well your sign meets these *Criteria*:

Elements:

Our Sign?

Any Changes Necessary?

## Planning for the Make

Now it's time to start production of your sign! Begin by making up a cut and materials list. List the dimensions and the types of materials you will need to complete your design.

Piece	Length	Width	Thickness	Material	#Needed

## Begin Production

Time to get to work. Plan out the production and start working! Make sure you have completed your instruction and safety sheets for all machines you will be using! (Router, Mitre Saw, Scroll Saw, Band Saw, Drill Press, Sanders, Hand Tools, etc...)